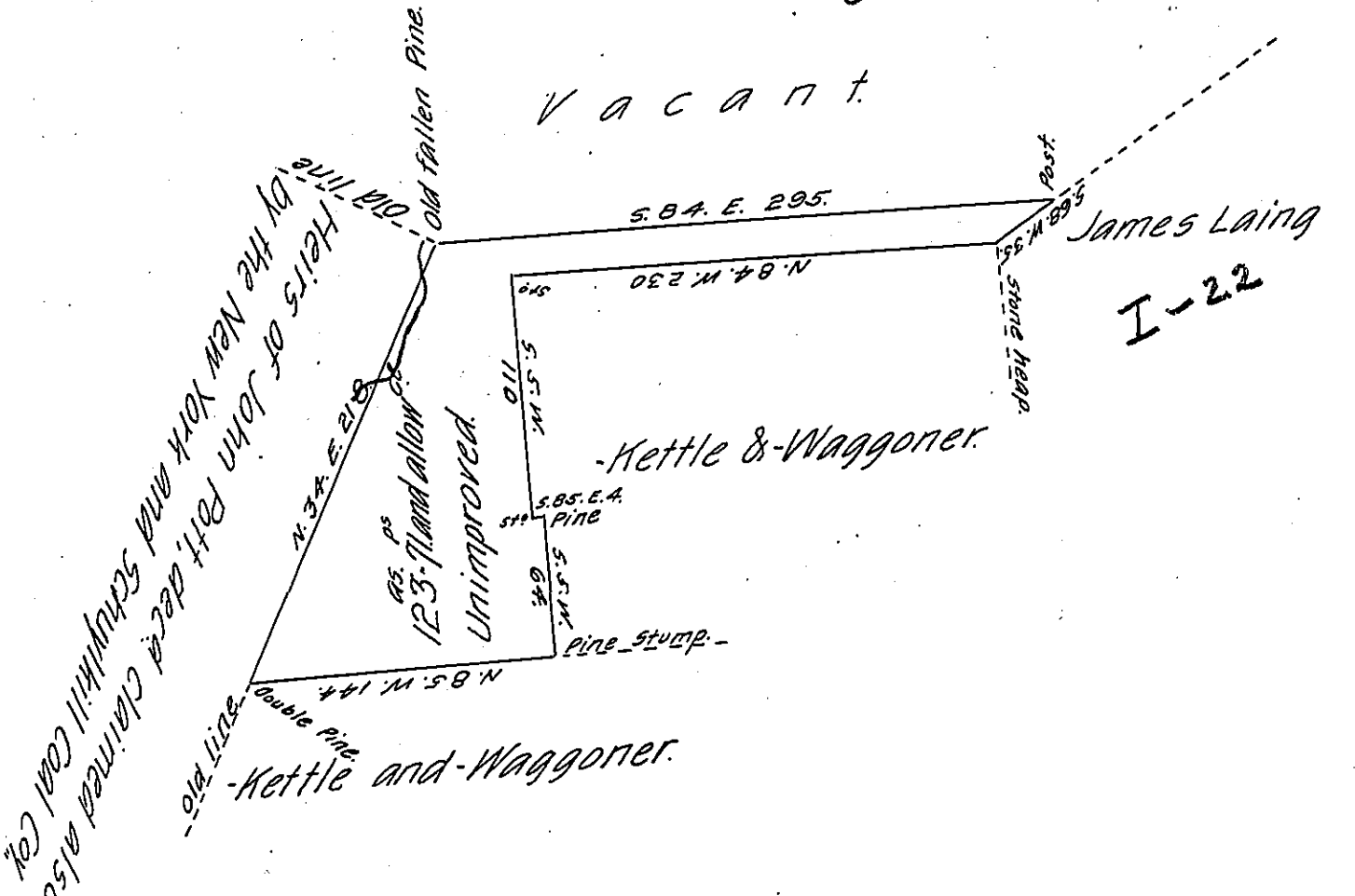


C 225-160



Situate in Norwegian township, Schuylkill county, containing one hundred and twenty three acres and seventy one perches, and the allowance of six per cent, surveyed on the 7<sup>th</sup> day of January 1828, in pursuance of a warrant dated the 19<sup>th</sup> day of November 1827, granted George D. B. Keim.

F. Lauderbrun,  
Dep. Surveyor of Schuylkill County

To Gabriel Hiester, Esquire,  
Surveyor General of Penn<sup>a</sup>

The above land is claimed by Benjamin Pott, one of the heirs of John Pott, dec'd, but it appears clearly to me from a thorough examination on the ground, that this land was vacant at the time the above survey was made.

F. Lauderbrun, D. S.

IN TESTIMONY that the above is a copy of the original remaining on file in the Department of Internal Affairs of Pennsylvania, made conformably to an Act of Assembly approved the 16th day of February, 1833, I have hereunto set my Hand and caused the Seal of said Department to be affixed at Harrisburg, this second day of August 1905.

*Isaac D. Brown*  
Secretary of Internal Affairs.